



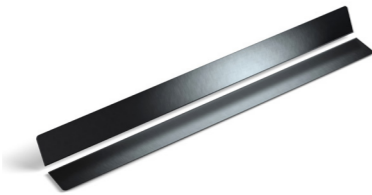
INSTALLATION

- » With stand
- » Hanging installation
- » With bracket



DIFUSSION FILTERS

- » 20°, 40°, 60° or 10° x 60°



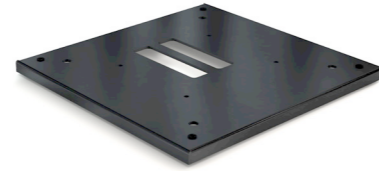
SHAPER

- » To sharpen the light beam even more



OMEGA BRACKET

- » For an fast and easy installation



FLOOR STAND

- » For standing installation



HANGING BRACKET

- » For hanging installation



CONNECTOR

- » To connect the Fusions with each other

EHRGEIZ 



FUSION₂

— The new standard in Linear Lighting —

WWW.EHRGEIZ.COM

FUSION 2

The Fusion 2 marks the begin of a new era in *Linear Lighting*. Because of its intelligent connector system the Fusion 2 creates seamless light lines — horizontal or vertical, indoor as well as outdoor. The most so called „bars“ are too weak to produce a homogenous area light. With the Fusion 2 it is no problem to change the reflection angle between beam to wide flood or also asymmetrical. Even when using diffusor plates the Fusion 2 creates more than enough light power. Nowadays light lines are an important part of modern stage designs. With the Fusion 2 you finally get a tool for such an application that even works fanless. Thanks to that feature the Fusion 2 is as flexible as possible. No matter if used in a theatre or on a concert — in- and outdoor - The Fusion 2 is the right choice.

» 20 OSRAM™ 15W RGBW LEDS

» CONSTANTCOLOR™ 6° OPTIC

» FANLESS OUTDOOR DESIGN

» SEAMLESS CONNECTION

» DIFFERENT BEAM ANGLES WITH DIFFUSOR PLATE

» VERTICAL STAND AND HANGING INSTALLATION

—— The new standard in Linear Lighting ——

TECHNICAL DATA

LIGHT SOURCE

- » 20 x 15 Watt RGBW Osram® LED
- » Lifetime LED: ca. 20.000 h.

OPTICAL SYSTEM

- » Beam angle 6°
- » Diffusor filter with 20°, 40°, 60° or 10° x 60° optional available

FUNCTIONS

- » High resolution dimmer 0-100%
- » Selectable dimming curves
- » Strobe with variable speed (max. 20 Hz)
- » Presets for random strobe and pulse effects
- » RGBW, 8 or 16 Bit color mixing
- » SteadyColor™ Dimming
- » all 20 LEDs separate controllable
- » Seamless CTO
- » Virtual color wheel with 39 colors including white (2700 K / 3200 K / 4200 K / 5600 K / 7200 K / 8000 K)
- » Pattern effects with variable speed and fade time

CONTROLLING AND PROGRAMMING

- » Setup and addressing via OLED display with 4 buttons
- » Protocol: USITT DMX-512
- » 8 DMX control modes
- » Stand-alone mode
- » Wireless DMX optional
- » RDM
- » DMX In/Out: XLR 5 pin (IP65)
- » Power In/Out: Neutrik powerCON TRUE1

THERMAL CONDITIONS

- » Max. environment temperature: 45° C (113° F)
- » Convection cooled

POWER SUPPLY

- » Electronic switching power supply with auto. recognition
- » Input voltage: 100 - 240 V AC, 50 / 60 Hz
- » Max. power consumption: 330 Watt

HARDWARE

- » IP65 protection class
- » Height with stand: 231 mm
- » Height without stand: 181 mm
- » Width: 90 mm
- » Length: 1006 mm
- » Weight: 12,5 kg

MOUNTING

- » 2 x M10
- » 2 x Omega Bracket
- » Mount for safety wires
- » 2 x stand with manual horizontal tilt
- » Stand for max. 2 units vertical (optional)
- » Bracket for vertical dropping (optional)

INCLUDED ACCESSORIES

- » 2x Omega Bracket with manual tilt
- » Adapter Schuko to powerCON TRUE1
- » IR Remote Control

OPTIONAL ACCESSORIES

- » Omega Bracket
- » Vertical Hanging Bracket
- » Diffusion filters
- » Floor Stand